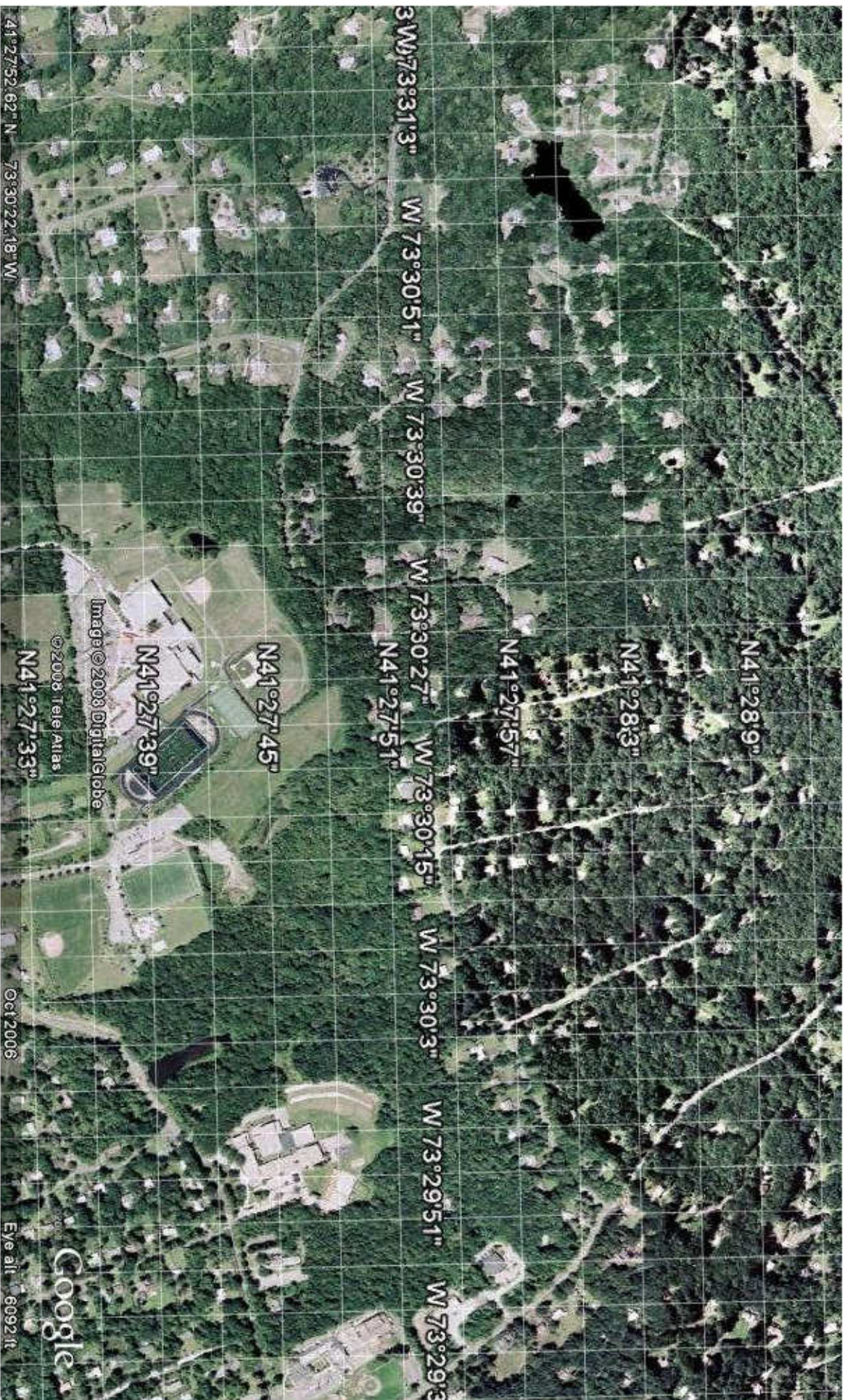


Aerial Map of New Fairfield High school vicinity.

Scale: Two squares is approximately 1/10 of a mile.

Scenario: There has been a lockdown at the high school, attendance records show that there is a student unaccounted for after the lockdown. Witnesses claim to have seen the student in the vicinity of the baseball diamond shortly after the lockdown occurred. You are in charge of the search and rescue operation. You begin searching by designating a triangular search area near the baseball diamond. You estimate that the missing person could probably have gotten about 1/4 mile away in the time they have been missing.

See the attached sheet for further procedural information.

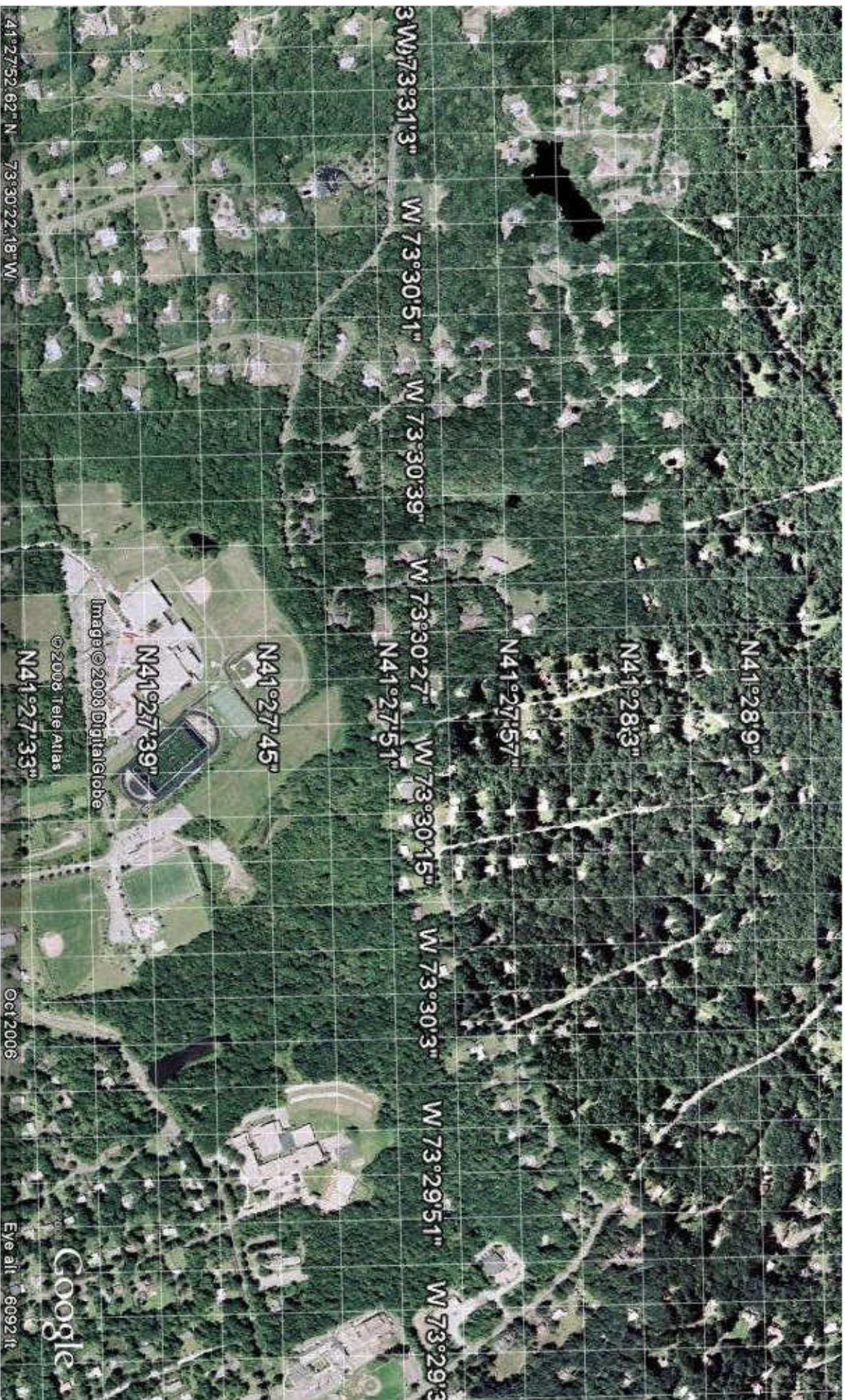


Aerial Map of New Fairfield High school vicinity.

Scale: Two squares is approximately 1/10 of a mile.

Scenario: There has been a lockdown at the high school, attendance records show that there is a student unaccounted for after the lockdown. Witnesses claim to have seen the student in the vicinity of the baseball diamond shortly after the lockdown occurred. You are in charge of the search and rescue operation. You begin searching by designating a triangular search area near the baseball diamond. You estimate that the missing person could probably have gotten about 1/4 mile away in the time they have been missing.

See the attached sheet for further procedural information.



Aerial Map of New Fairfield High school vicinity.

Scale: Two squares is approximately 1/10 of a mile.

Scenario: There has been a lockdown at the high school, attendance records show that there is a student unaccounted for after the lockdown. Witnesses claim to have seen the student in the vicinity of the baseball diamond shortly after the lockdown occurred. You are in charge of the search and rescue operation. You begin searching by designating a triangular search area near the baseball diamond. You estimate that the missing person could probably have gotten about 1/4 mile away in the time they have been missing.

See the attached sheet for further procedural information.