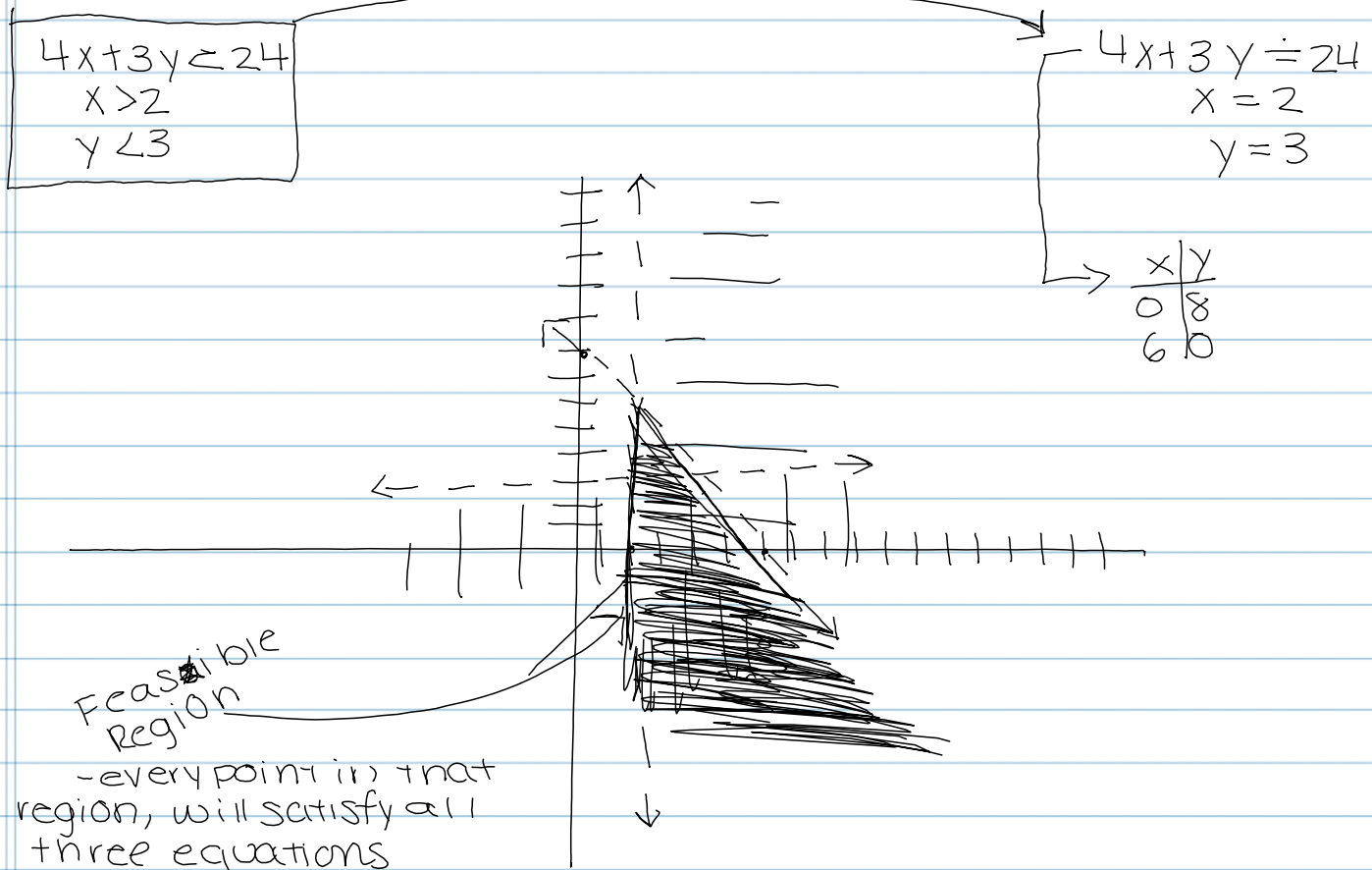


😊 ⊕
Alg II - honors ♡

11/3/10

Graphing Linear Inequalities



Test point: → can't be on line

- If the statement is true, then you shade the same side the first point
- If false, shade the opposite side

- 1) Graph your lines
(replace inequalities symbols with equal temporarily)
- 2) Sketch lines according to the type of inequality symbol
- 3) Use a test point to determine which side of line to shade
 - If test is true than shade same side as test point
 - If false shade other side