

Alt Geometry

What is the ratio of opposite leg and adjacent leg?
tangent (Tan)

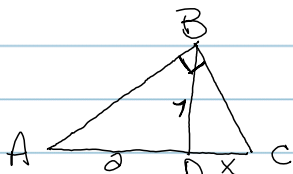
Angle formed by horizontal line up to another point is called angle of elevation.

8 is the geo. means of 4 + 16.

Measures of angles $< 90^\circ$ are acute.

how can you locate the hyp. of a ~~major~~ right Δ .
across from the 90° angle.

In a right Δ 90° angle is the \angle ^{that} is the intersection of the 2 legs.



$$\frac{2}{7} = \frac{7}{x}$$

$$2x = 49$$

$$x = 24.5$$

Given ΔABC when B is the right angle & \overline{BD} is an altitude that divides the hyp. into 2 seg.

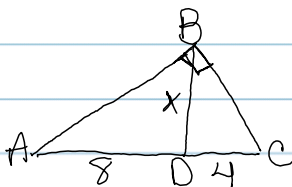
$\overline{BD} = 7$
 $\overline{AD} = 2$
Find \overline{DC}



$$\frac{5}{7} = \frac{7}{x}$$

$$5x = 49$$

$$x = 9.8$$



$$x = 4\sqrt{2}$$

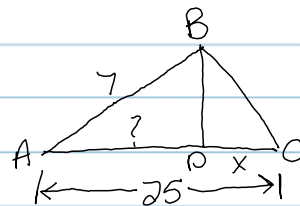
$$\frac{8}{x} = \frac{x}{4}$$

$$\sqrt{32} = \sqrt{x^2}$$

$$x = \sqrt{32}$$

$$\sqrt{16 \cdot 2}$$

$$4\sqrt{2}$$



$$\frac{25}{7} = \frac{7}{(25-x)}$$

